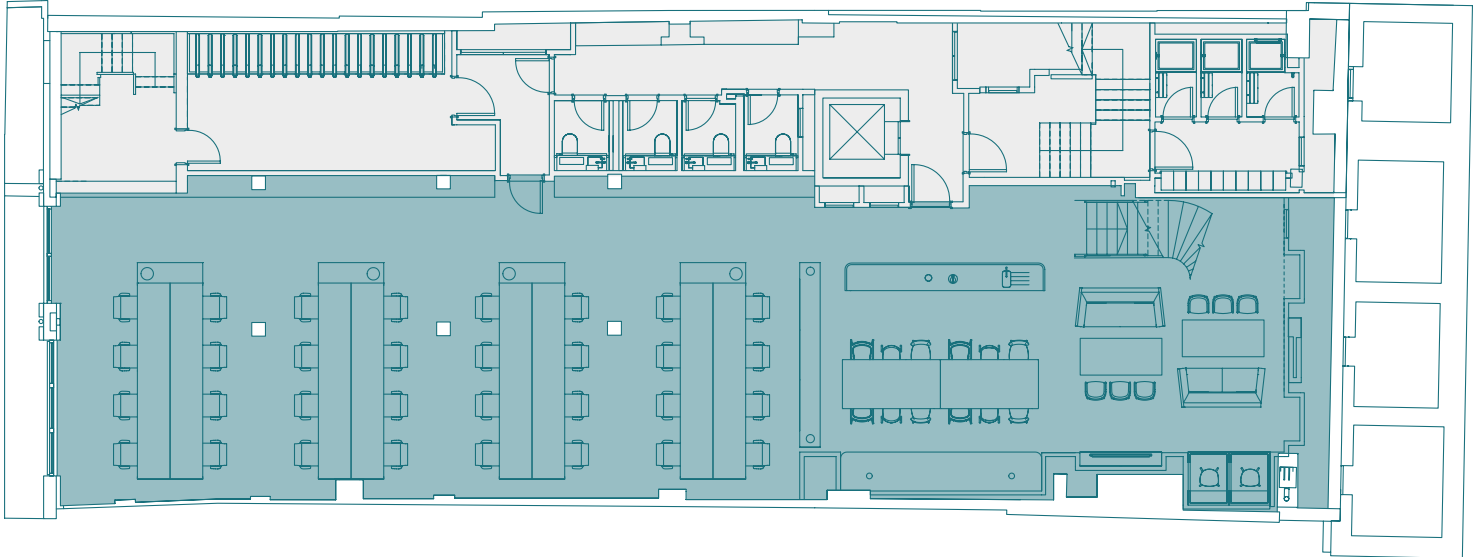


Lower Ground Floor

Office – 234 m² / 2,519 ft²

Open plan desks	32
Informal meeting area	1
12 person hotdesk	1
Teapoint / breakout	1
Private phone booths	2
Total working positions	32
Occupancy	1:8 m²



- Office
- Reception
- Terrace
- Core

For indicative purposes only, not to scale. 